



Virtual Screening to Identify the Protein Network Interaction of Theophylline in Red Complex Pathogens

S. Amrithaashri ^a, J. Vijayashree Priyadharshini ^{b*}, A. S. Smiline Girija ^b and P. Sankar Ganesh ^b

^a Saveetha Dental College and Hospital, Saveetha Institute of Medical and Technical Sciences, Saveetha University, Chennai-600077, India.

^b Department of Microbiology, Saveetha Dental College and Hospital, Saveetha Institute of Medical and Technical Sciences, Saveetha University, Chennai-600077, India.

Authors' contributions

This work was carried out in collaboration among all authors. Author SA carried out the literature search, data collection, data analysis and manuscript writing. Author ASSG has conceived the study, participated in its design and coordinated and provided guidance to draft the manuscript. All authors have equally contributed in developing the manuscript. All authors read and approved the final manuscript.

Article Information

DOI: 10.9734/JPRI/2021/v33i64B35738

Open Peer Review History:

This journal follows the Advanced Open Peer Review policy. Identity of the Reviewers, Editor(s) and additional Reviewers, peer review comments, different versions of the manuscript, comments of the editors, etc are available here: <https://www.sdiarticle5.com/review-history/74463>

Original Research Article

Received 24 October 2021
Accepted 29 December 2021
Published 30 December 2021

ABSTRACT

Background: Plants, herbs and plant derived compounds have been used since decades in folk and traditional medicine. These compounds were found to be non-toxic and compatible with the human cells. Screening of this exhaustive collection of compounds seems to be a herculean task. Hence, virtual screening methods have been developed to predict the potential targets of these compounds enabling researchers to acquire preliminary data on the compound intended to be tested *in vitro*.

Aim: The present study aims to identify protein targets of theophylline in red complex pathogens which are mainly associated with periodontitis.

Methods: The STITCH v5.0 pipeline was mainly used to classify drug-protein interactions, while VirulentPred and VICMPred were used to determine the proteins' virulence properties and

functional classes. PSORTb v3.0 was used to determine the subcellular localization of viral proteins, and BepiPred v1.0 Linear Epitope Prediction was used to classify epitopes.

Results: Proteins of red complex pathogens implicated in cellular process, metabolism, and virulence were identified to interact with theophylline. The virulent proteins attacked by the drugs were present in the cytoplasm, which would improve the drugs' antimicrobial efficacy even more. Finally, epitope prediction showed a number of epitopes in virulent proteins that can be targeted.

Conclusions: Proteins involved in the cellular process, metabolism, and virulence of red complex pathogens targeted by theophylline were identified. To substantiate the true interactions between the drugs and the protein arsenal of pathogens, further *in vitro* experiments on a broad range of pathogens are required.

Keywords: Theophylline; antimicrobial; periodontitis; virulence; novel targets.

1. INTRODUCTION

Antimicrobial drug resistance has emerged as a great menace in the hospital settings. Novel drugs are being screened for their activity against microbial pathogens. One common and the most cost effective method of drug screening is using silico tools. Several studies have been designed previously to assess the role of bioactive compounds against common dental pathogens [1–3]. In view of the facts, existing bioactive compounds are being tested to identify the potential targets in common pathogens. Theophylline is a bioactive component in black tea (*Camellia sinensis*). It has been found in green coffee beans and trace amounts were detected in cacao cotyledon (<https://www.ncbi.nlm.nih.gov/books/NBK507021/>). Several existing antibiotics or non-steroidal anti-inflammatory drugs have been repurposed for use against dental pathogens [4]. Singh and team reported that theophylline possesses antifungal activity against *Candida albicans*. Theophylline has no discernible pre-systemic elimination, readily distributes into fat-free tissues, and is substantially processed in the liver. Renal excretion of unaltered theophylline in newborns is around 50% of the dosage, compared to around 10% in children older than three months and adults [5].

The mode of action was damage to the membrane exerted by the elevation in flippase activity which resulted in membrane fluidity. Theophylline relaxes the smooth muscle of the bronchial airways and pulmonary blood vessels, lowering airway reactivity to histamine, methacholine, adenosine, and allergens [6]. Theophylline inhibits type III and type IV phosphodiesterase (PDE), the enzyme responsible for breaking down cyclic AMP in smooth muscle cells, perhaps leading to

bronchodilation. Theophylline also binds to the adenosine A2B receptor, preventing adenosine-induced bronchoconstriction [7]. Theophylline stimulates histone deacetylase in inflammatory situations to block transcription of inflammatory genes that require histone acetylation to initiate transcription. Another study conducted by Borkowski et al., 2016 demonstrated the cytotoxic effects of theophylline based ionic liquids towards *Bacillus cereus* and *Escherichia coli*. These results provide evidence on the use of theophylline as a potent antimicrobial drug. But the lacunae which is encountered is the information on the molecular targets [8]. The aim of this study is to identify protein network interaction of theophylline in red complex pathogens using virtual screening. Our team has extensive knowledge and research experience that has translate into high quality publications [9–12], other articles about cytotoxic effects like [13–16] studies are also done about antioxidant [17–20], other studies about antibacterial activity was also done [21–24], and also other studies about microbes were also done [25–27].

2. MATERIALS AND METHODS

2.1 Study Design

The present study follows an observational study design which aims to screen for the interaction of theophylline in red complex pathogens. The interaction was analysed using STITCH v.5 pipeline [28]. The functional class of proteins identified were assessed using VICMPred [29] and VirulentPred softwares [30]. The microbial pathogens *Treponema denticola* ATCC 35405, *Tannerella forsythia* ATCC 43037, *Porphyromonas gingivalis* ATCC 33277 are the strains of red complex pathogens that are included in the present study.

2.2 Prediction of Protein-Drug Interactions

To predict the interactions between proteins and chemicals STITCH database (Version 5; 2016) is used. The repertoire of proteins which interacts with *T. forsythia*, *P. gingivalis* and *T. denticola* and were further used for predicting virulence [28].

2.3 Virulence Prediction

For the identification of virulence factors the software used was VICMpred [29] and VirulentPred [30] pipelines. There are two groups of virulence factors that were screened using the VirulentPred tool based on amino acids that are virulent and avirulent. VICMpred groups proteins are classified into four major classes: proteins involved in metabolism, information storage, virulence and cellular processes. The overall accuracy of VirulentPred servers and VICMpred were 86% and 70.75%, respectively.

2.4 Prediction of Subcellular Localization of the Virulent Proteins

The novel drug targets plays an important role in an antimicrobial drug which targets the virulent protein. The subcellular localization of proteins aids in designing using the Computational prediction. The great interest is that cell surface proteins can be used in making vaccines. An algorithm which assigns a probable localization site to a protein from an amino acid sequence is pSORTb V3.0 [31].

2.5 Prediction of B-cell Epitopes in the Virulent Proteins

For the prediction of B-cell epitopes from a protein sequence the server BepiPred-2.0 was used. It employs the Random Forest algorithm, which discriminates between epitopes and non-epitope amino acids determined by its crystal structures. To be part of an epitope the residues with scores above the threshold (>0.5) [32,33].

3. RESULTS AND DISCUSSION

Numerous proteins were identified in the red complex pathogens being targeted by theophylline. Proteins identified in *P. gingivalis* are mostly involved in cellular processes. The

proteins belonging to three functional classes except for virulence factors were identified in *T. denticola*. The proteins of *T. forsythia* were mostly avirulent and of the functional class cellular process and metabolism. Only one protein was identified as a virulence factor viz., hypothetical protein [BFO_2902]. The subcellular location of type I phosphodiesterase-nucleotide pyrophosphatase, and cardiolipin synthase were found in the cytoplasmic membrane. The acetyl hydrolase identified in *T. denticola* was found to be the virulent protein. Among all the proteins identified, type I phosphodiesterase-nucleotide pyrophosphatase [PGN_0239], alkaline phosphatase [PGN_1457], cardiolipin synthase [PGN_0466] of *Porphyromonas gingivalis* and acetyl hydrolase [TDE_2263] of *Treponema denticola* were found to be the virulent proteins. Multiple epitopes were identified in the alkaline phosphatase enzyme of *P. gingivalis*.

Polymer mixing is a simple yet appealing way for obtaining polymer physical and mechanical characteristics that are blended. In this research, three different types of blend hydrogels were created by physically mixing two distinct natural polymers, and a model drug, theophylline (TPH), was adsorbed into these hydrogels for drug release investigations, comparatively this study is based on the effect of the red complex pathogens. A cost-effective method to fast-track development of drugs is drug repurposing. Some of the drugs have been already tested against dental pathogens using in silico procedures [34]. These drugs when used with other existing antibiotics act synergistically to enhance the therapeutic spectrum. Biofilm formers are especially important in dental settings because the combination of pathogens are found to do more harm to the host tissues than when they are seen individually. This complex demonstrates how interlocking structural motifs may be used to provide a highly selective ligand-binding site with high affinity and molecular selectivity, same with the red complex pathogens. Targeting biofilm formers renders pathogens more vulnerable to antibiotic treatment and immune responses of the host. Theophylline, a xanthine analog, causes abnormal cells [35]. There are not many reports which can relate to the antimicrobial effect of theophylline against dental pathogens. In this context, the present study has identified targets of theophylline which are potential virulent proteins of the red complex pathogens. Further experimental analysis is required to establish this fact.

Table 1. Protein Network interaction of red complex pathogens interacting with theophylline

| Organism | Identifier | Proteins which interacts with theophylline | VICMPred Functional Class | VirulentPred | Virulent Pred Score | |
|---------------------------------|----------------------------|--|---|-------------------------|---------------------|---------------|
| <i>Porphyromonas gingivalis</i> | PGN_0120 | Hypothetical protein | Cellular process | Avirulent | -0.978 | |
| | PGN_1181 | Thiol:disulfide oxidoreductase | Cellular process | Avirulent | -1.064 | |
| | PGN_2017 | Hypothetical protein | Cellular process | Avirulent | -1.074 | |
| | PGN_0488 | Hypothetical protein | Metabolism | Avirulent | -0.820 | |
| | PGN_0239 | Type I phosphodiesterase-nucleotide pyrophosphatase | Cellular process | Virulent | 0.1068 | |
| | PGN_1457 | Alkaline phosphatase | Virulence factors | Virulent | 0.2650 | |
| | PGN_1081 | Hypothetical protein | Cellular process | Avirulent | -0.597 | |
| | PGN_0373 | Thioredoxin | Metabolism Molecule | Avirulent | -0.915 | |
| | PGN_0367 | Exodeoxyribonuclease III | Cellular process | Avirulent | -0.992 | |
| | PGN_0466 | Cardiolipin synthetase | Cellular process | Virulent | 1.1591 | |
| | <i>Treponema denticola</i> | TDE_2263 | Acetyl hydrolase | Cellular process | Virulent | 1.1463 |
| | | TDE_2372 | Hypothetical protein | Metabolism Molecule | Avirulent | -1.045 |
| TDE_2369 | | Hypothetical protein | Metabolism Molecule | Avirulent | -0.820 | |
| TDE_1734 | | Exodeoxyribonuclease III | Information and storage | Avirulent | -0.993 | |
| TDE_0957 | | Glycerophosphoryl diester phosphodiesterase | Metabolism Molecule | Avirulent | -0.904 | |
| TDE_0799 | | Glycerophosphoryl diester phosphodiesterase | Cellular process | Avirulent | -0.997 | |
| TDE_1370 | | Hypothetical protein | Cellular process | Avirulent | -1.079 | |
| TDE0238 | | Thioredoxin, selenocysteine-containing | Cellular process | Avirulent | -0.981 | |
| TDE1641 | | Ribose-5-phosphate isomerase A | Metabolism Molecule | Avirulent | -1.032 | |
| TDE0744 | | Thioredoxin | Cellular process | Avirulent | -0.942 | |
| <i>Tannerella forsythia</i> | | BFO_2118 | YjeF C-terminal domain-containing protein | Metabolism | Avirulent | -0.997 |
| | BFO_3041 | Type I phosphodiesterase/nucleotide pyrophosphatase | Metabolism | Avirulent | -0.951 | |
| | BFO_2171 | AhpC/TSA family antioxidant protein | Metabolism | Avirulent | -1.089 | |
| | BFO_2902 | Hypothetical protein | Virulence factors | Avirulent | -1.068 | |
| | BFO_1753 | Thioredoxin | Metabolism | Avirulent | -0.980 | |
| | BFO_1832 | Putative cardiolipin synthetase | Cellular process | Avirulent | -1.034 | |
| | BFO_0550 | Glycerophosphodiester phosphodiesterase family protein | Metabolism | Avirulent | -0.595 | |

| Organism | Identifier | Proteins which interacts with theophylline | VICMPred Functional Class | VirulentPred | Virulent Pred Score |
|----------|------------|--|---------------------------|--------------|---------------------|
| | BFO_2690 | Glycerophosphodiester phosphodiesterase family protein | Cellular process | Avirulent | -1.014 |
| | BFO_1118 | Hypothetical protein | Cellular process | Avirulent | -1.022 |
| | BFO_1729 | Thioredoxin | Metabolism | Avirulent | -0.962 |

Table 2. Subcellular localization of virulence protein in *Porphyromonas gingivalis* and *Treponema denticola*

| Virulent Protein | Subcellular location | Score |
|--|----------------------|-------|
| Putative type I phosphodiesterase-nucleotide pyrophosphatase | Cytoplasmic Membrane | 9.82 |
| Alkaline phosphatase | Unknown | - |
| Putative cardiolipin synthetase | Cytoplasmic Membrane | 10.00 |
| Acetyl hydrolase, putative | Cytoplasmic | 8.96 |

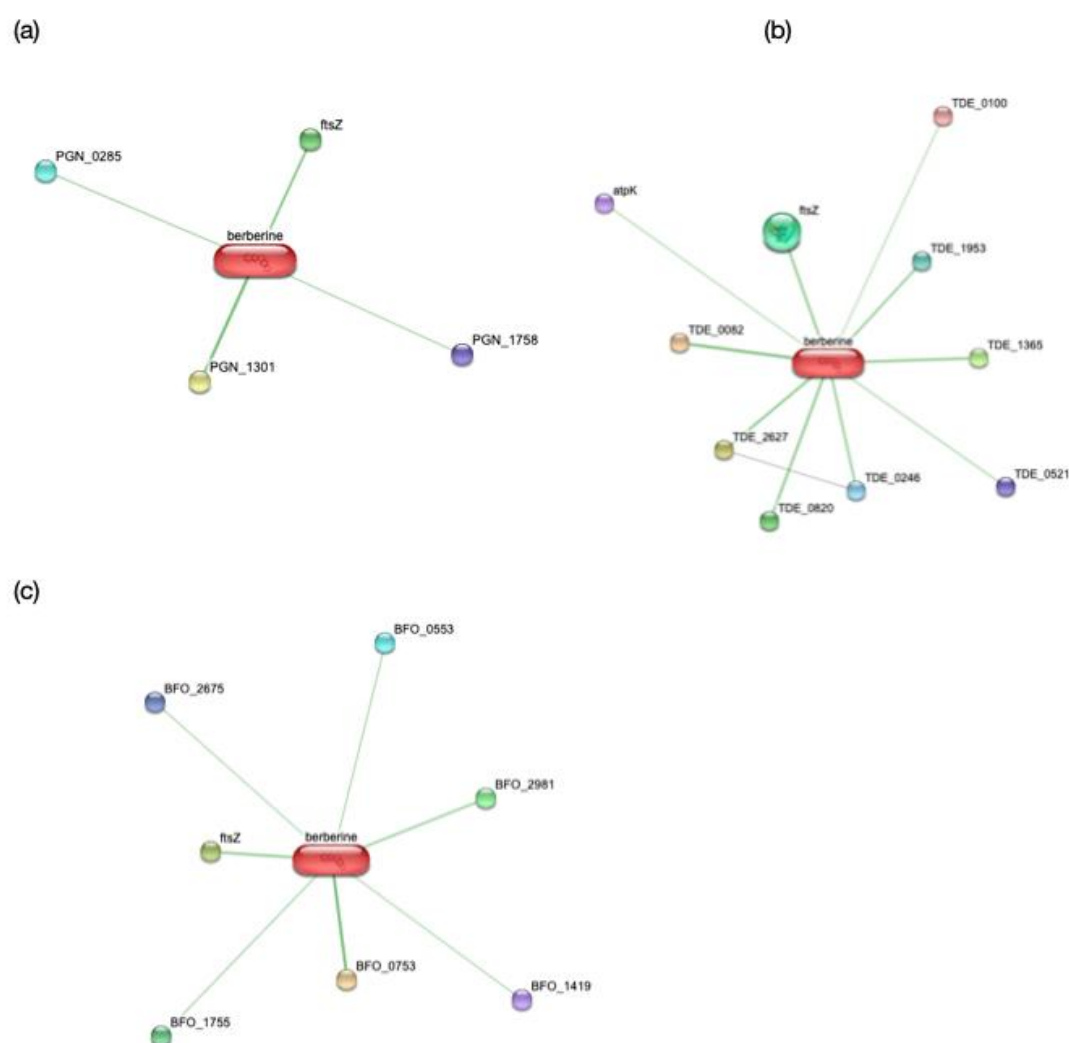


Fig. 1. Protein interaction network of (a) *Porphyromonas gingivalis* (b) *Treponema denticola* and (c) *Tannerella forsythia* with theophylline

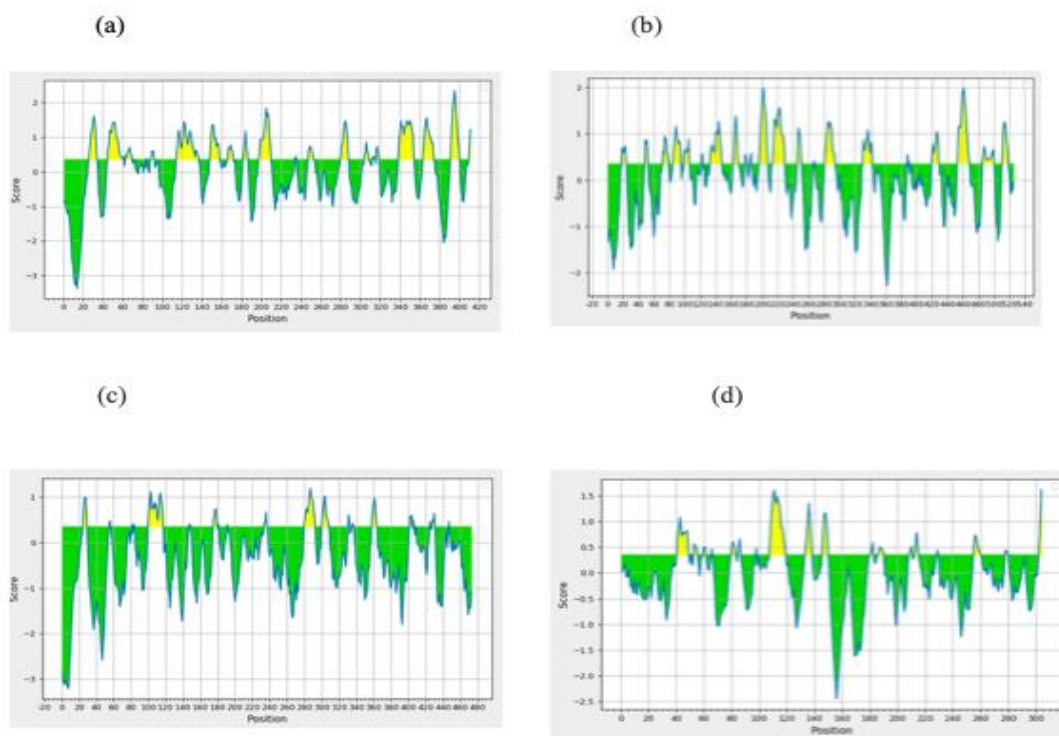


Fig. 2. Predicted epitopes on virulent proteins identified using computational tools. (a) Type I phosphodiesterase-nucleotide pyrophosphatase [PGN_0239] (b) Alkaline phosphatase [PGN_1457] (c) Cardiolipin synthetase [PGN_0466] of *Porphyromonas gingivalis* and (d) Acetyl hydrolase [TDE_2263] of *Treponema denticola*

4. CONCLUSION

The research discovered molecular targets of theophylline on red complex pathogens, which must be verified in order to validate the essential mechanism caused by the drugs in physiological conditions. To the best of our knowledge, this is the first research of its kind that seeks to understand the molecular targets of theophylline in red complex pathogens. Further, *in vitro* and *in vivo* tests can be used to determine the drug's dose, minimum inhibitory concentration and minimum bactericidal concentration.

CONSENT AND ETHICAL APPROVAL

It is not applicable.

ACKNOWLEDGEMENT

The author would like to thank the faculty members of the department of Microbiology, Saveetha Dental College and Hospital, Chennai for helping out with research.

COMPETING INTERESTS

Authors have declared that no competing interests exist.

REFERENCES

1. Barnes PJ. Theophylline. *Am J Respir Crit Care Med.* 2013 Oct 15;188(8):901–6.
2. Nakamura H, Aoshiba K. Chronic obstructive pulmonary disease: a systemic inflammatory disease. Springer. 2016; 352.
3. Bisgaard H, O'Callaghan C, Smaldone GC. Drug Delivery to the Lung. CRC Press. 2001;536.
4. Priyadharsini JV. *In silico* validation of the non-antibiotic drugs acetaminophen and ibuprofen as antibacterial agents against red complex pathogens [Internet]. *Journal of Periodontology.* 2019;90:1441–8. Available:<http://dx.doi.org/10.1002/jper.18-0673>
5. Ushanthika T, Smiline Girija AS, Paramasivam A, Priyadharsini JV. *An in*

- silico* approach towards identification of virulence factors in red complex pathogens targeted by reserpine. *Nat Prod Res*. 2021 Jun;35(11):1893–8.
6. Henderson B, Nair SP, Ward JM, Wilson M. Molecular pathogenicity of the oral opportunistic pathogen *Actinobacillus actinomycetemcomitans*. *Annu Rev Microbiol*. 2003;57:29–55.
 7. Haydon PG, Zoran MJ. Formation and modulation of chemical connections: evoked acetylcholine release from growth cones and neurites of specific identified neurons. *Neuron*. 1989;2(5):1483–90.
 8. Muthukrishnan L. Imminent antimicrobial bioink deploying cellulose, alginate, EPS and synthetic polymers for 3D bioprinting of tissue constructs. *Carbohydr Polym*. 2021 May 15;260:117774.
 9. PradeepKumar AR, Shemesh H, Nivedhitha MS, Hashir MMJ, Arockiam S, Uma Maheswari TN, et al. Diagnosis of Vertical Root Fractures by Cone-beam Computed Tomography in Root-filled Teeth with Confirmation by Direct Visualization: A Systematic Review and Meta-Analysis. *J Endod*. 2021;47(8):1198–214.
 10. Chakraborty T, Jamal RF, Battineni G, Teja KV, Marto CM, Spagnuolo G. A Review of Prolonged Post-COVID-19 Symptoms and Their Implications on Dental Management. *Int J Environ Res Public Health* [Internet]. 2021 May 12;18(10). Available:<http://dx.doi.org/10.3390/ijerph18105131>
 11. Muthukrishnan L. Nanotechnology for cleaner leather production: a review. *Environ Chem Lett*. 2021;19(3):2527–49.
 12. Teja KV, Ramesh S. Is a filled lateral canal - A sign of superiority? *J Dent Sci*. 2020 Dec;15(4):562–3.
 13. Narendran K, Jayalakshmi, Ms N, Sarvanan A, Ganesan S A, Sukumar E. Synthesis, characterization, free radical scavenging and cytotoxic activities of phenylvilangin, a substituted dimer of embelin. *ijps* [Internet]. 2020;82(5). Available:<https://www.ijpsonline.com/article/s/synthesis-characterization-free-radical-scavenging-and-cytotoxic-activities-of-phenylvilangin-a-substituted-dimer-of-embelin-4041.html>
 14. Reddy P, Krithikadatta J, Srinivasan V, Raghu S, Velumurugan N. Dental Caries Profile and Associated Risk Factors Among Adolescent School Children in an Urban South-Indian City. *Oral Health Prev Dent*. 2020;18(1):379–86.
 15. Sawant K, Pawar AM, Banga KS, Machado R, Karobari MI, Marya A, et al. Dentinal Microcracks after Root Canal Instrumentation Using Instruments Manufactured with Different NiTi Alloys and the SAF System: A Systematic Review. *NATO Adv Sci Inst Ser E Appl Sci*. 2021;11(11):4984.
 16. Bhavikatti SK, Karobari MI, Zainuddin SLA, Marya A, Nadaf SJ, Sawant VJ, et al. Investigating the Antioxidant and Cytocompatibility of *Mimusops elengi* Linn Extract over Human Gingival Fibroblast Cells. *Int J Environ Res Public Health* [Internet]. 2021;18(13). Available:<http://dx.doi.org/10.3390/ijerph18137162>
 17. Karobari MI, Basheer SN, Sayed FR, Shaikh S, Agwan MAS, Marya A, et al. An *In Vitro* Stereomicroscopic Evaluation of Bioactivity between Neo MTA Plus, Pro Root MTA, BIODENTINE & Glass Ionomer Cement Using Dye Penetration Method. *Materials* [Internet]. 2021 Jun 8;14(12). Available:<http://dx.doi.org/10.3390/ma14123159>
 18. Rohit Singh T, Ezhilarasan D. Ethanolic Extract of *Lagerstroemia speciosa* (L.) Pers. Induces Apoptosis and Cell Cycle Arrest in HepG2 Cells. *Nutr Cancer*. 2020;72(1):146–56.
 19. Ezhilarasan D. MicroRNA interplay between hepatic stellate cell quiescence and activation. *Eur J Pharmacol*. 2020;885:173507.
 20. Romera A, Peredpaya S, Shparyk Y, Bondarenko I, Mendonça Bariani G, Abdalla KC, et al. Bevacizumab biosimilar BEVZ92 versus reference bevacizumab in combination with FOLFOX or FOLFIRI as first-line treatment for metastatic colorectal cancer: a multicentre, open-label, randomised controlled trial. *Lancet Gastroenterol Hepatol*. 2018;3(12):845–55.
 21. Raj R K, D E, S R. β -Sitosterol-assisted silver nanoparticles activates Nrf2 and triggers mitochondrial apoptosis via oxidative stress in human hepatocellular cancer cell line. *J Biomed Mater Res A*. 2020;108(9):1899–908.
 22. Vijayashree Priyadharsini J. In silico validation of the non-antibiotic drugs acetaminophen and ibuprofen as antibacterial agents against red complex

- pathogens. J Periodontol. 2019;90(12): 1441–8.
23. Priyadharsini JV, Vijayashree Priyadharsini J, Smiline Girija AS, Paramasivam A. In silico analysis of virulence genes in an emerging dental pathogen *A. baumannii* and related species [Internet]. Archives of Oral Biology. 2018;94:93–8. Available:<http://dx.doi.org/10.1016/j.archorlabio.2018.07.001>
24. Uma Maheswari TN, Nivedhitha MS, Ramani P. Expression profile of salivary micro RNA-21 and 31 in oral potentially malignant disorders. Braz Oral Res. 2020;34:e002.
25. Gudipani RK, Alam MK, Patil SR, Karobari MI. Measurement of the Maximum Occlusal Bite Force and its Relation to the Caries Spectrum of First Permanent Molars in Early Permanent Dentition. J Clin Pediatr Dent. 2020;44(6): 423–8.
26. Chaturvedula BB, Muthukrishnan A, Bhuvanaraghan A, Sandler J, Thiruvenkatachari B. Dens invaginatus: a review and orthodontic implications. Br Dent J. 2021;230(6):345–50.
27. Kanniah P, Radhamani J, Chelliah P, Muthusamy N, Joshua Jebasingh Sathiyala Balasingh E, Reeta Thangapandi J, et al. Green synthesis of multifaceted silver nanoparticles using the flower extract of *Aerva lanata* and evaluation of its biological and environmental applications. ChemistrySelect. 2020;5(7):2322–31.
28. Szklarczyk D, Santos A, von Mering C, Jensen LJ, Bork P, Kuhn M. STITCH 5: augmenting protein-chemical interaction networks with tissue and affinity data. Nucleic Acids Res. 2016;44(D1):D380–4.
29. Saha S, Raghava GPS. VICMpred: an SVM-based method for the prediction of functional proteins of Gram-negative bacteria using amino acid patterns and composition. Genomics Proteomics Bioinformatics. 2006;4(1):42–7.
30. Garg A, Gupta D. VirulentPred: a SVM based prediction method for virulent proteins in bacterial pathogens. BMC Bioinformatics. 2008;9:62.
31. Yu NY, Wagner JR, Laird MR, Melli G, Rey S, Lo R, et al. PSORTb 3.0: improved protein subcellular localization prediction with refined localization subcategories and predictive capabilities for all prokaryotes. Bioinformatics. 2010;26(13): 1608–15.
32. Larsen JEP, Lund O, Nielsen M. Improved method for predicting linear B-cell epitopes. Immunome Res. 2006;2:2.
33. Jespersen MC, Peters B, Nielsen M, Marcatili P. BepiPred-2.0: improving sequence-based B-cell epitope prediction using conformational epitopes. Nucleic Acids Res. 2017;45(W1):W24–9.
34. Daigaku TN. Annual Report of Tokyo University of Agriculture and Technology. 1987;1104.
35. Kawamukai M, Murao K, Utsumi R, Himeno M, Komano T. Cell filamentation in an *Escherichia coli* K-12 fic mutant caused by theophylline or an adenylate cyclase gene (*cya*)-containing plasmid. FEMS Microbiol Lett. 1986;34(1):117–20.

© 2021 Amrithaashri et al.; This is an Open Access article distributed under the terms of the Creative Commons Attribution License (<http://creativecommons.org/licenses/by/4.0>), which permits unrestricted use, distribution, and reproduction in any medium, provided the original work is properly cited.

Peer-review history:

The peer review history for this paper can be accessed here:
<https://www.sdiarticle5.com/review-history/74463>